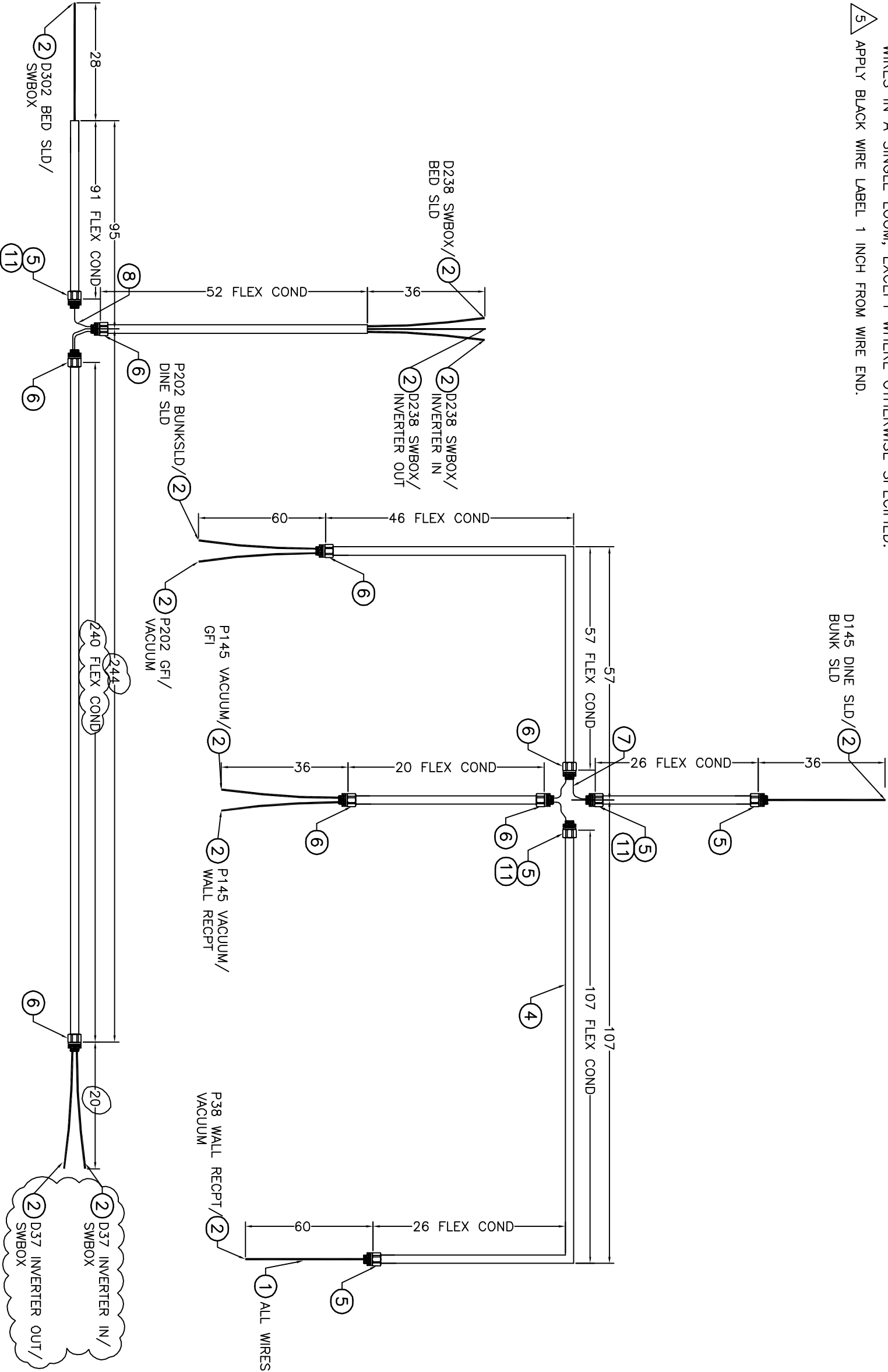


- NOTES:
- 1) DIMENSIONS ARE IN INCHES.
  - 2) APPLY WIRE ASSIGNMENT LABEL 2 TO 6 INCHES FROM WIRE END.
  - 3) WIRE LABEL SIZE SHALL BE 1 INCH MIN.

4) APPLY SMALLEST SIZE LOOM THAT WILL COVER ALL WIRES IN AN AREA INTO SEALTIGHT CONDUIT AND INCLUDE ALL BREAKOUT WIRES IN A SINGLE LOOM, EXCEPT WHERE OTHERWISE SPECIFIED.

5) APPLY BLACK WIRE LABEL 1 INCH FROM WIRE END.

ITEM	QTY	SIZE1	UNITS	PART#	DESCRIPTION	MATERIAL	NOTE
1	1	1608	in	007858	CABLE 12/2 ROMEX		
2	12		ea	019789	LABELS	PANDUIT	
3	1	246	in	007882	1/2 IN. FLEXIBLE CONDUIT		
4	1	411	in	007883	3/4 IN. FLEXIBLE CONDUIT		
5	5		ea	5016298	1/2 IN. STRAIGHT LIQUID TIGHT CONN		
6	7		ea	009214	3/4 IN. STRAIGHT LIQUID TIGHT CONN	CAT# 4725	
7	1		ea	5020906	3/4 IN. LIQUID TITE CROSS		
8	1		ea	5020905	3/4 IN. LIQUID TITE T		
9	1	250	in	009152	LOOM		
10	2		ea	5020907	CVR GASKET KIT 3/4	270G	
11	3		ea	19208	BUSHING 1X3/4		



THIS DOCUMENT IS THE PROPERTY OF TIFFIN MOTORHOMES AND REPRESENTS A PROPRIETARY ARTICLE IN WHICH TIFFIN MOTORHOMES RETAINS ANY AND ALL PATENT AND OTHER RIGHTS, INCLUDING EXCLUSIVE RIGHTS OF USE AND/OR MANUFACTURE AND/OR SALE. POSSESSION OF THIS PRINT DOES NOT CONVEY ANY PERMISSION TO REPRODUCE PRINT OR MANUFACTURE ARTICLE(S) SHOWN HEREIN, SUCH PERMISSION TO BE GRANTED ONLY BY SPECIFIC AUTHORIZATION IN WRITING, SIGNED BY AN OFFICER OR OTHER AUTHORIZED AGENT OF TIFFIN MOTORHOMES, THEREOF. SPECIFICATION CANNOT BE CHANGED WITHOUT WRITTEN APPROVAL OF TIFFIN MOTORHOMES.

REV#	DATE	ECON#	DESCRIPTION	BY
A	02/19/2014		SHORTENED INVERTER CIRCUITS FOR INVERTER MOVE	JDB

TIFFIN MOTORHOMES, INC.	
105 2ND STREET NW - RED BAY, AL 35582	
2013 35 QBA 110V FLR HARNES	
HARNES LAYOUT	

